

Accessibility Guide for the IOU Hostel Hebden Bridge

email: info@hebdenbridgehostel.org

Tel: +44 (0)1422 553578

Web: www.hebdenbridgehostel.org

Contact for accessibility enquiries: Jill Penny



The IOU Hebden Bridge Hostel is a two story building, fully accessible on the ground floor. We have a disabled car parking space in the car park and an accessible pathway to the front door. There is an accessible toilet on the ground floor and also a fully accessible double room including wet room, ensuite shower and toilet, specifically designed for wheelchair users, also on the ground floor.

As a not for profit organisation managed by registered charity IOU, any money we make is put back into improving our facilities and supporting the local economy, offering

affordable and contemporary accommodation for everyone, including artists, families, walkers, cyclists, music lovers, community groups and schools.

Our friendly hostel team can be available to support your visit should you require it.

If you would like to visit the hostel prior to booking please give us a call on

+44 (0)1422 553578 or email info@hebdenbridgehostel.org. info@

We would be delighted to show you round.

At a Glance

Level Access

There is level access from the main entrance to:

- Dining Room
- Seating Area
- Snug
- Accessible Toilet
- Disabled Access double bedroom and wet room
- The Outside Terrace

Hearing

- The fire alarm has flashing lights.

Visual

- The windows, walls and the doors have high colour contrast.

How To Find Us

IOU Hebden Bridge Hostel

The Birchcliffe Centre

Hebden Bridge

HX7 8DG

The postcode takes you to Chapel Avenue, **please do not turn into here as it is a dead end.**

Continue past Chapel Avenue, past the Birchcliffe Centre on your left and turn into the next street on the left, Highfield.

You will see a sign for **IOU Hebden Bridge Hostel** Continue up Highfield into the car park. The Hostel is on the left, to the right of the Birchcliffe Centre, which will be immediately in front of you where the disabled car parking spot is. Follow the sloping

path down to the right and we are the orange-painted building to the right of the Birchcliffe Centre.

Public Transport

Hebden Bridge Train Station is well connected, 30 mins from Manchester and 40 mins from Leeds Train Station. There is a lift on either side of the station platform.

Regular buses (595) run from Hebden Bridge Train Station at 10 minutes to and 20 minutes past the hour. Ask the driver for The Birchcliffe Centre. Debit/credit cards can be used on local buses

<https://www.wymetro.com/plan-a-journey/> offers information about accessibility.

If you need a local taxi contact Hebden Cars on +44 (0)1422 845555 or Valley Taxis on +44 (0)1422 844070 for the best rates locally and to the Airports. To transport a wheelchair there are two local taxi firms based in Halifax, A Star on +44 (0)1422 344111 and Ziggys on +44 (0)1422 363636, both offering wheelchair accessible vehicles.

Parking

Free disabled parking is available on the lower car park with a step free access directly down to the hostel. This is a shared car park so please request a disabled parking space on the lower car park if required. If you do not require a disabled parking space, please park in the top car park

Occasionally there is a small friendly dog on site. If this causes you concern in any way please let us know and we will make sure he is not around when you are.

Arrival

Path to main entrance



From the car park to the main entrance, there is ramp access.
The path is 150cm wide.

Main entrance



The main entrance has level access.

The door is 90cm wide.

The main door is side hung and not automatic.

You will be sent a door code via email to gain entry. There is a key pad which requires that you input the door code. If you require assistance with this please let the team know and we can be on hand to help.

Getting around inside

Visual Impairment - General Information

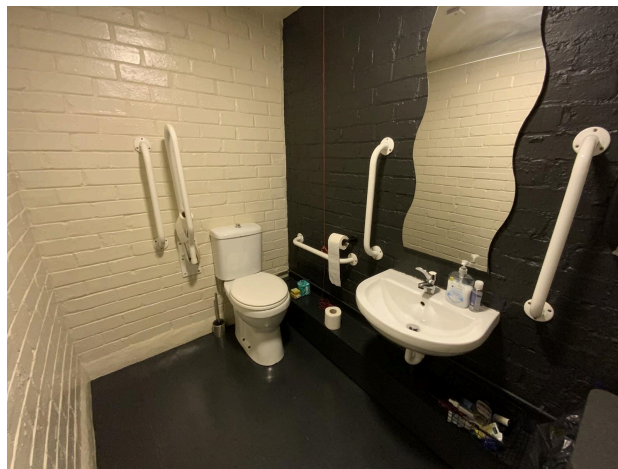
- We have contrast markings on all glass doors, contrast markings on all full-height windows and high colour contrast between walls and door frames.

Reception



- From the main entrance to this area, there is level access. The route is 160 cm wide, or more.
- The door is 90cm wide.

Accessible Toilet



- There is ramp access on the ground floor to the toilet. The route is 90cm wide, or more.
- The toilet door is 90cm wide.
- The direction of transfer onto the toilet is to the right.
- There is 80cm at the side of the toilet. There is 160 cm in front of the toilet. The toilet seat is 48 cm high. The toilets have handrails.

Eating and Seating Area



- From the main entrance to the eating and seating area, there is level access. The route is 160 cm wide, or more. The door is 150 cm wide.
- To get to a table, there are no steps.
- The route through the eating and seating area is 100cm wide, or more.
- The kitchen is vegetarian with teas, coffee, cereals and milks available
- The eating and seating area is a flexible space that can be used for meetings, presentations, training, celebrations etc.

Getting around outside



The Terraces

- From the main entrance and from the side entrance to these areas, there is level access. The route is 160 cm wide, or more.
- The entrance is 95cm wide.
- The Terrace is fully accessible, to get to a table, there are no steps.

Customer care support

Accessibility equipment

- Scooters and Wheelchairs can only be charged from a 13 amp mains socket, a charger specific to the wheelchair will be required.
- You can hire mobility equipment from Shopmobility, 4-6 The Square, Woolshops, Halifax, West Yorkshire, HX1 1RJ by calling +44 (0)1422 344040.
- You can hire mobility equipment from Brook Miller Mobility Ltd Unit 1A Elland Lane Elland West Yorkshire HX5 9DZ by calling +44 (0)1422 376 645.

Emergency evacuation procedures

- We have emergency evacuation procedures for disabled visitors. We will issue a PEEP questionnaire on booking followed by a PEEP plan for guests who identify as hearing, sight or mobility impaired. If a disability is non disclosed but apparent on arrival we will offer a PEEP plan to the guest
- The fire alarm has sounders and flashing lights.

Guide last updated: 17 January 2025